

MOBILE HOME GARDENS

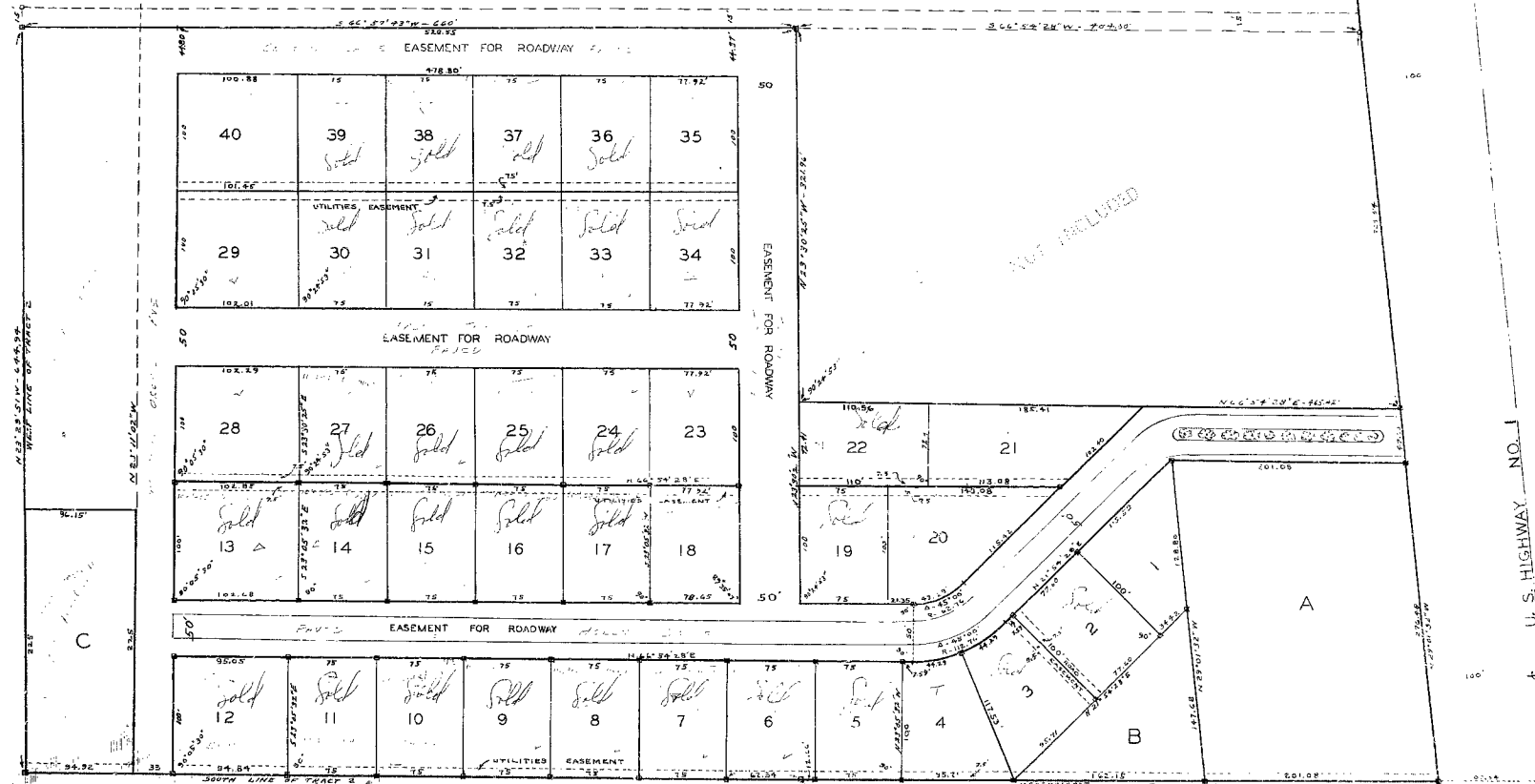
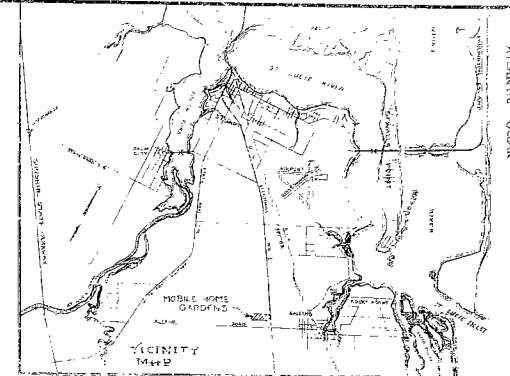
BEING PART OF TRACTS 1 & 2, BLOCK 70, ST. LUCIE INLET FARMS S/D,
 PLAT BK. 1, PG. 98, PUBLIC RECORDS OF PALM BEACH COUNTY, NOW
 MARTIN COUNTY, FLORIDA.

CONDITION OF DOCUMENT
 UNREPEALABLE BY MICROFILMING

SCALE 1" = 50'

22:1

JANUARY 1966
 APPROVED BY
 JANUARY 7, 1965



I HEREBY CERTIFY THAT THE ATTACHED MAP IS A TRUE AND CORRECT REPRESENTATION OF A SURVEY, MADE UNDER MY DIRECTION, AND THAT SAID SURVEY WAS ACCURATE TO THE BEST OF MY KNOWLEDGE AND BELIEF.

James E. Brock
 REGISTERED LAND SURVEYOR
 FLORIDA CERTIFICATE NO. 651

S.W. CORNER OF TRACT 1 AND S.E. CORNER OF TRACT 2, BLOCK 70, OF ST. LUCIE INLET FARMS SUBDIVISION.

□ - CONCRETE MONUMENT

STAFFORD BROCK
 ENGINEERING-SURVEYING
 38 EAST OCEAN BLVD.,
 STUART, FLORIDA
 FILED 25-27